



www.lihjaw.com.tw

Lockworld



ABOUT US

Founded in 1993, Lih Jaw is a professional manufacturer in security field of bicycle & motorcycle in Taiwan. In view of "security counts on quality", for years Lih Jaw has made effort on the development of high quality locks that give customers the greatest safety of bikes from theft. Most of our products are patented and certificated by SSF and ART.

Not only stress the requirement of quality but also think of vogue and demands for markets, Lih Jaw itself to the development of new products that provides customers the most needed locks. In addition to the promise of quality, fast delivery and best service is the benefit you enjoy from Lih Jaw with the establishment of business.

Lih Jaw has an excellent reputation for selling worldwide with owned brand. Any cooperation of ODM/OEM is welcome as well and we absolutely have the confidence to make it accomplish satisfyingly.

CONTENTS

About Us

Contents

Foldable Lock

LJ-9018A	P03
LJ-9016	P04
LJ-9086A	P05
LJ-9080S/9080M.....	P06
LJ-9080M14/9080L.....	P07

Pincer Lock

LJ-9060L16	P09
------------------	-----

U Lock

LJ-8166/8166B	P10
LJ-8166B+816B	P11
LJ-8062/8062B	P12
LJ-8600S16/8600L18.....	P13
LJ-8150A	P14

Padlock

LJ-8025, LJ-8025L16.....	P15
LJ-8026	P16
LJ-8027	P17
LJ-8031, LJ-8030	P18
LJ-8007,8008,8009,8010,8011.....	P19
LJ-8071,8072,8075,8076,8077.....	P20

Chain Lock

LJ-7211A	P22
LJ-7500, LJ-7300	P23
LJ-7305, LJ-7800PI.....	P24

Bone Lock

LJ-7000/7000C	P25
---------------------	-----

Disc Lock

LJ-2512M, LJ-2512S, LJ-2512L19...	P27
LJ-2312, LJ-2013NP.....	P28
LJ-2012S/2012M	P29
LJ-2612S/2612M	P30

Chain

LJ-113, LJ-112	P31
LJ-112L	P32
LJ-115	P33

Bow Eye

LJ-107/107S	P34
-------------------	-----

D Ring Anchor

LJ-300	P35
--------------	-----

Cable Lock & Chain Lock

LJ-6200NP, LJ-6001.....	P36
-------------------------	-----

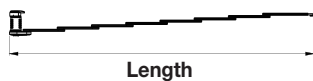
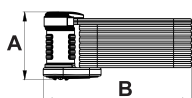
Cable

LJ-3010	P37
---------------	-----

LJ-9018A



- Shackle is made of heat treatment alloy steel to resist saws, cutters and hammers
- Recommended for bicycles, E-bikes



Suits 25~38mm bike frame
Option 1

Item No.	Diameter	Size(A-B)	Length
LJ-9018A	6.5*28mm	74*162 mm	890mm
LJ-9018AL	6.5*28mm	74*174 mm	1000mm

LJ-9016



LJ-016 Lock Bracket



Velcro+
bottle holder
Option 2



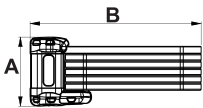
LJ-016 Bottle holder
Option 1



Suits 25~38mm bike frame
Option 1

Foldable Lock

- Combination bicycle lock, with 5-digit resettable combination
- Shackle is made of heat treatment alloy steel to resist saws, cutters and hammers
- Recommended for bicycles, E-bikes



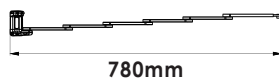
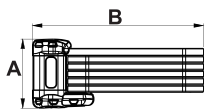
Item No.	Diameter	Size(A-B)	Length
LJ-9016	6.5*28mm	77*183 mm	1010mm
LJ-9016S	6.5*28mm	77*170 mm	900mm

LJ-9086A



apply to bicycle frame
Bracket LJ-906

- Made of heat treatment alloy steel to resist saws, cutters and hammers
- Recommended for bicycles, E-bikes
- Bracket able to turn left 45° or right 45°, convenient to take the lock



Item No.	Diameter	Size	Length
LJ-9086A	6.5*28mm	74*162 mm	780mm

*Internal bar:5mm

LJ-9080S / 9080M

Foldable Lock



- Shackle is made of heat treatment alloy steel to resist saws, cutters and hammers
- Approved by SBSC
- Special in lock flexibility design

- Recommended for securing bicycles, E-bikes, scooters and gates



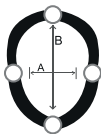
Suits 25-38mm bike frame
Option 1



Option 1



Option 2



Item No.	Diameter	Size (A-B)	Length
LJ-9080S	12mm	110*205 mm	23"
LJ-9080M	12mm	110*300 mm	30.5"

LJ-9080M14 / 9080L



Suits 25-38mm bike frame
Option 1

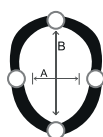


Option 1



Option 2

- Made of heat treatment alloy steel to resist saws, cutters and hammers
- Approved by SBSC
- Special in lock flexibility design
- Recommended for bicycles, E-bikes



Item No.	Diameter	Size (A-B)	Length
LJ-9080M14	14 mm	110*300 mm	30.5"
LJ-9080L	12.7 mm	127*410 mm	41"



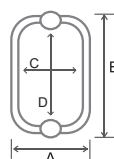
LJ-9060L16



Suits 25-38mm bike frame



- Ø 16mm shackle is made of hardened steel against hitting and attacks
- Anti-pick key (lock mechanism structure)
- Keyhole cap against dirt



Item No.	Diameter	Size (A-B)	Size (C-D)
LJ-9060L16	16 mm	150*280 mm	110*210 mm
LJ-9060LB16	16 mm	208*300 mm	170*230 mm

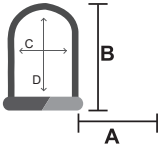
LJ- 8166 / 8166B



Suits 25~38mm bike frame

U Lock

- Made of alloy steel against hitting and attacks
- Lock mechanism structure
- Approved by SBSC



Item No.	Diameter	Size (A-B)	Size (C-D)
LJ-8166B	14 mm	170*268 mm	105*200 mm
LJ-8166	12.7 mm	170*268 mm	105*200 mm
LJ-8166	12.7 mm	170*343 mm	105*275 mm
LJ-8166	14 mm	170*268 mm	105*200 mm
LJ-8166	14 mm	170*343 mm	105*275 mm

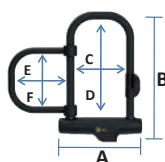
LJ-8166B+816B

U Lock



Suits 25~38mm bike frame

- Made of alloy steel against hitting and attacks
- Lock mechanism structure
- SWING ARM can secure either the front or back wheel and the immovable object allows for a wider range of lock up scenarios



Item No.	Diameter	Size (A-B)	Size (C-D)	Size (E-F)
LJ-8166B+816B	12.7 mm	170*268 mm	105*200 mm	108*108 mm
LJ-8166B+816B	12.7 mm	170*343 mm	105*275 mm	108*108 mm
LJ-8166B+816B	14 mm	170*268 mm	105*200 mm	108*108 mm
LJ-8166B+816B	14 mm	170*343 mm	105*275 mm	108*108 mm

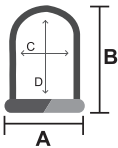
LJ-8062 / 8062B



Suits 25~38mm bike frame

U Lock

- Made of heat treatment alloy steel to resist saw, cutters and hammers



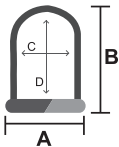
Item No.	Diameter	Size (A-B)	Size (C-D)
LJ-8062	12/14mm	194x250mm	108X200mm
LJ-8062	12/14mm	194x325mm	108X275mm

LJ-8600S16 / 8600L18

U Lock



- Made of heat treatment alloy steel to resist saws, cutters and hammers
- Mechanism lock structure
- The lock is supplied with two keys
- Replacement key service



Item No.	Diameter	Size (A-B)	Size (C-D)
LJ-8600S16	Ø16 mm	178*185 mm	85*120 mm
LJ-8600S16-1	Ø16 mm	178*220 mm	85*155 mm
LJ-8600S16-2	Ø16 mm	178*375 mm	85*310 mm
LJ-8600L18-1	Ø18 mm	198*230 mm	102*162 mm

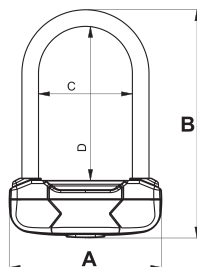
LJ-8150A



Suits 25~38mm bike frame

U Lock

- The shackle is made of alloy steel against hitting and attacks
- Lock mechanism structure
- The lock is supplied with two keys
- Product weight: 0.91 kgs



Item No.	Diameter	Size(A-B)	Size(C-D)
LJ-8150A	12.7 mm	138*210 mm	85*140 mm



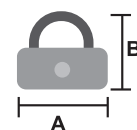
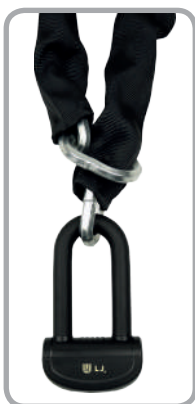
LJ-8025

- Shackle and lock body made from alloy steel
- ABS cover against hitting and attacks
- Approved by SBSC (class 3)



LJ-8025L16

- Offer additional or replacement key service



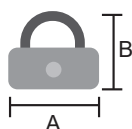
Item No.	Diameter	Size (A-B)
LJ-8025M	12.7 mm	95 X 115 mm
LJ-8025ML14	14 mm	95 X 135 mm
LJ-8025L16	16 mm	95 X 170 mm

LJ-8026



Padlock

- Shackle and lock body made from alloy steel
- ABS cover against hitting and attacks
- Approved by SBSC (class 3)



Item No.	Diameter	Size (A-B)
LJ-8026M	12.7 mm	95 X 115 mm
LJ-8026ML14	14 mm	95 X 135 mm
LJ-8026L16	16 mm	95 X 170 mm

LJ-8027

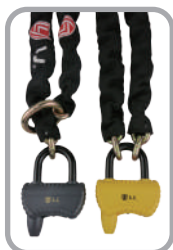
Padlock



Hook and lock are engaged



- Shackle link with lock body
- Shackle and lock body made from alloy steel
- ABS cover against hitting and attacks
- 14mm hardened alloy steel shackle resists cutters and leverage attacks
- Approved by SBSC (class 3)
- Offer additional or replacement key service



Item No.	Diameter	Size(AxB)
LJ-8027	14mm	100x145mm

LJ-8031

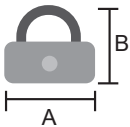


LJ-8030



Padlock

- Shackle and lock body made from alloy steel
- ABS cover against hitting and attacks
- Approved by SBSC (class 3)
- Offer additional or replacement key service

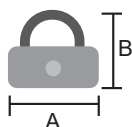


Item No.	Diameter	Size (A-B)
LJ-8030	12.7 mm	92 X 595 mm
LJ-8031	12.7 mm	95 X 115 mm
	14 mm	95 X 135 mm



- Shackle and lock body made from alloy steel
- More than 10,000 key variations
- Offer additional or replacement key service
- Surface by electroplating & corrosion resistant

- S approved by SBSC (class 3)
- LJ-8011 approved by SBSC (class 4)



Item No.	Diameter	Size (A-B)
LJ-8007	8 mm	42 X 72 mm
LJ-8008	10 mm	50 X 84 mm
LJ-8009	12 mm	64 X 128 mm
LJ-8010	12 mm	70 X 100 mm
LJ-8011	14 mm	72 X 123 mm
LJ-8016	16 mm	72 X 123 mm

LJ-8071



LJ-8075



Class 3



LJ-8076

- Shackle and lock body made from alloy steel
- Anti-drill cylinder
- More than 10,000 key variations
- Offer additional or replacement key service



LJ-8071



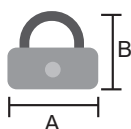
LJ-8072



LJ-8075



LJ-8077



Item No.	Diameter	Size (A-B)
LJ-8071	12 mm	61*89 mm
LJ-8072	12 mm	61*88 mm
LJ-8075	12 mm	61*89 mm
LJ-8076	12 mm	80*97 mm
LJ-8077	12 mm	61*88 mm



LJ-7211A



Chain Lock

- Made of alloy steel with heat treatment against hitting and attacks
- Product compliant SBSC and ART certification standards
- Lock mechanism structure

Item No.	Chain dia.	Available Length
LJ-7211A	Ø7mm Ø8.5mm	0.85M/1.1M/1.4M 0.85M/1.1M/1.4M

LJ-7500**LJ-7300**

- Made of alloy steel with heat treatment against hitting and attacks
- Approved by SBSC and ART
- Anti theft cylinder
- Lock mechanism structure
- Replacement key service



Item No.	Chain Dia.	Available Length
LJ-7300	8.5/10 mm	85cm/110cm/140cm
LJ-7500	8.5/10 mm	85cm/110cm/140cm

LJ-7305



- Alloy steel of heat treatment against hitting and attacks
- Lock mechanism structure
- Offer additional or replacement key service



- The chain is made of special hardened steel
- PVC housing is coated on chain
- Anti theft cylinder
- Anti-dust cap on keyhole against dirt
- Lock mechanism structure
- Offer additional or replacement key service



LJ-7800PT

Item No.	Chain Dia.	Available Length
LJ-7305	12	110cm/140cm/170cm
LJ-7800PT	25	40"(1.0 M) / 48" (1.2 M)

Chain Lock

LJ-7000 / 7000C

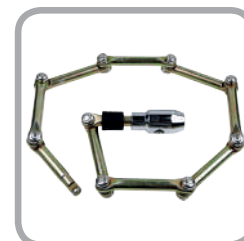
BONE LOCK



Bone Lock



- Alloy steel of heat treatment against hitting and attacks
- PVC cloth is cover on chain
- Approved by SBSC and ART
- Lock mechanism structure
- Replacement key service

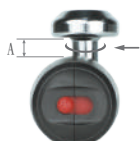


Item No.	Chain Dia.	Available Length
LJ-7000	16 mm	33"/41.5"/50"
LJ-7000C	16 mm	33"/41.5"/50"



LJ-2512M**LJ-2512S****LJ-2512L19**

- The shackle is made of alloy steel against hitting and attacks
- Approved by SBSC and ART
- Anti-pick key (lock mechanism structure)
- Offer additional or replacement key service



Item No.	Pin Dia.	(A) Length
LJ-2512S	14/16 mm	9 mm
LJ-2512M	14/16 mm	30 mm
LJ-2512L19	19 mm	99 mm



LJ-101
Option



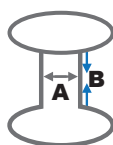
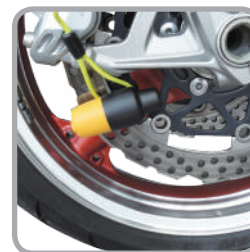
LJ-2312

- The shackle is made of alloy steel against hitting and attacks
- ABS cover for lock body
- Approved by SBSC and ART
- Lock mechanism structure
- Offer additional or replacement key service



LJ-2013NP

- Made of Zinc alloy and hardened steel of heat treatment
- Lock is covered by nylon
- Optional accessory LJ-3010 cable

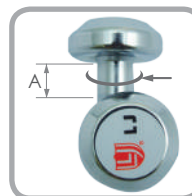


Item No.	Pin Diameter (A)	Length (B)
LJ-2013NP	13 mm	12 mm
LJ-2312	14/16 mm	10/30 mm

LJ-2012S / 2012M



- Made of alloy steel with heat treatment resists saws, cutters and hammers
- Approved by SBSC and ART
- Anti-pick key (lock mechanism structure)
- Supply key duplication or replacement service



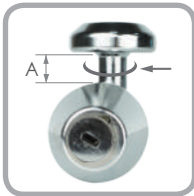
Item No.	Pin Dia.	(A) Length
LJ-2012	14/16 mm	13 mm/33 mm

LJ-2612S / 2612M

Disc Lock



- Made of alloy steel with heat treatment against hitting and attacks
- Anti-pick key (lock mechanism structure)
- Replacement key service



Item No.	Pin Dia.	(A) Length
LJ-2612S	14/16 mm	13 mm
LJ-2612M	14/16 mm	33 mm

LJ-113**LJ-112**

- The chain made from alloy steel
- Ultra resistant to saws, cutters and hammers
- 10mm approved by SBSC (class 3)
- Big ring (Ø12.7mm)



Item No.	Chain Dia.	Available Length	Big Ring Dia.
LJ-102	5.7 mm	95 CM	Ø12.7mm
LJ-112	10 mm	1.0 / 1.2 / 1.5M - 3M	Ø12.7mm
LJ-113	10 mm	1.0 / 1.2 / 1.5M - 3M	Ø12.7mm

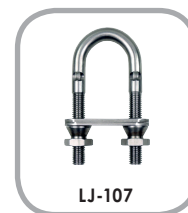
LJ-112L



- The chain made from alloy steel
- Approved by SBSC (class 3)
- Big ring (Ø14mm)



LJ-107S



LJ-107



LJ-8025



LJ-8027



Item No.	Chain Dia.	Available Length
LJ-112L	10 mm	1.7 / 2.2 / 2.5M

LJ-115



- The chain made from alloy steel
- Approved by SBSC (class 3)
- Big ring (Ø14mm)



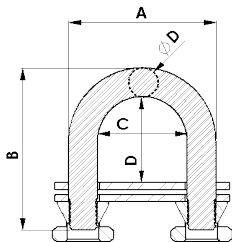
Item No.	Chain Dia.	Available Length	Big Ring Dia.
LJ-115	Ø12mm	1.4/1.7/2.2/2.5M	Ø12mm ○
LJ-115B	Ø13mm	1.4/1.7/2.2/2.5M	Ø15mm ○

LJ-107 / 107S

Bow Eye



- Stainless steel for all parts, rust and corrosion resistance, sturdy, durable
- U-bolts may be used where an eye bolt would be too small or extra strength is required
- Also commonly used as deck hardware in highly corrosive marine environments
- Supplied with nuts and gasket



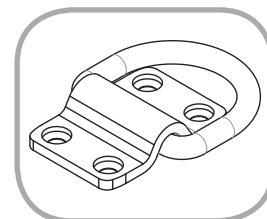
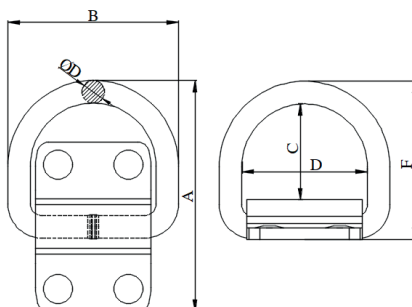
Item No.	Diameter	Size(A-B)	Size(C-D)
LJ-107	Ø 12 mm	61*118mm	37*36mm
LJ-107S	Ø 12 mm	61*67mm	37*36mm

LJ-300

D Ring Anchor Lock



- D ring is made of heat treatment alloy steel
- 8mm Ø fixed anchor
- Durable finish coated with a highly scratch and oxidation resistant paint
- Compatible with large diameter chains, steel cables, and most chain lock on market
- Fixing anchor on wall or ground to secure motorcycle, bicycles, scooters, machines... inside or outside the house



Item No.	ØD	A	B	C	D	F
LJ-300	16 mm	164 mm	121 mm	68 mm	89 mm	112 mm



Bracket LJ-230

Suits 25~38mm bike frame



LJ-6200NP

- Nylon cover for lock body
- Anti-pick key



LJ-6001

- Alloy steel of heat treatment against hitting and attacks
- Product compliant SBSC and ART certification standards
- Lock mechanism structure



Item No.	Chain dia.	Available Length
LJ-6001	Ø7mm Ø8.5mm	0.85M/1.1M/1.4M 0.85M/1.1M/1.4M
LJ-6200NP	12/15 mm	24"/36"/48"60"72"

LJ-3010

Cable



2.5mm Ø Warning cable



- Aluminum bundle cable cover PVC housing
- Straight and roll two type

Outer Dia.	Inner Dia.	Available Length
8 mm	4.8 mm	48"/60"/72"...
10 mm	6 mm	48"/60"/72"...
12 mm	6.4 mm	48"/60"/72"...





LOCKWORLD
www.lihjaw.com.tw

LIH JAW INDUSTRIAL CO., LTD.

ADD: No. 6, Sec. 2, Antong Rd., Annan Dist.,
Tainan City 709005, Taiwan (R.O.C.)

TEL: 886-6-3552181

FAX: 886-6-3552183

Email: lihjaw1@ms17.hinet.net

Website: www.lihjaw.com.tw

